



Technical Data Sheet

Diagenode sa

CHU, Tour GIGA B34, 3^e étage
Avenue de l'Hôpital, 1
4000 Liège - Belgium

Product name:
antibody directed against EGFP

(Enhanced Green-Fluorescent-Protein)

Other names; GFP enhanced

Catalog #: pAb-074-050	Type: Polyclonal	Size: 50 µg/ 32 µl
Lot #: 001	Source: Goat	Concentration: 1.6 µg/µl

Description: This antibody has been raised against the full length His-tagged EGFP protein.

Specificity: NA

Applications	Suggested dilution	References
ELISA	Not tested	
Dot blotting	Not tested	
Western blotting	Not tested	
Gel Supershift	Not tested	
Immunofluorescence	1:800	Fig 1
Flow cytometry	Not tested	
Immunoprecipitation	Not tested	
ChIP	Not tested	

Format: Polyclonal, affinity purified, antibody in PBS containing 0.05% azide and 0.05% ProClin.

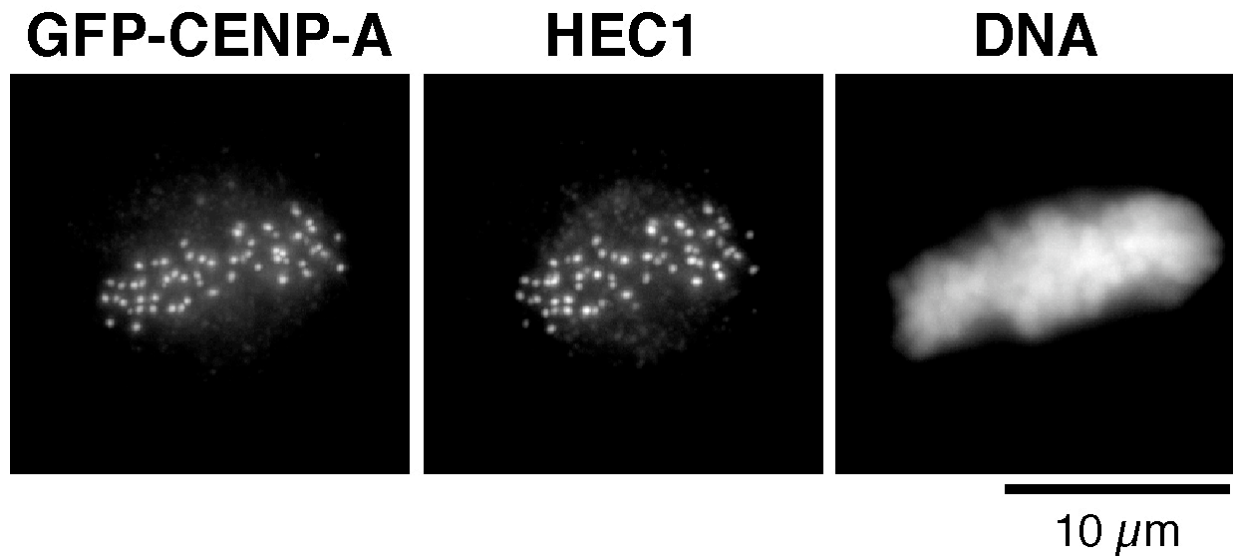
Storage: Store at -20°C/ -80°C. Avoid multiple freeze-thaw cycles.

Precautions: This product is for research use only. Not for use in diagnostic or therapeutic procedures.

Availability date: February 29, 2008. Last data sheet update: April 04, 2008

Lot #: 001/ purification date: September 28, 2007

Figure 1



Indirect immunofluorescence results obtained with the Diagenode EGFP antibody

A mitotic human HeLa cell stably expressing a GFP-CENP-A fusion was fixed with 4% formaldehyde and processed for immunofluorescence using the goat anti-GFP antibody (cat # pAb-074-050, 2 μg/ml) and a monoclonal mouse anti-HEC1 antibody. As secondary antibodies, a CY2-labeled anti-goat and a CY3-labeled anti-mouse antibody were used. DNA was visualized using Hoechst staining. Images of the cell were taken with a Deltavision microscope. The images shown in figure 1 represent a projection of approximately 30 0.2 μm optical sections.

Overview

The green fluorescent protein (GFP) is a protein originally isolated from jellyfish that fluoresces green when exposed to blue light. GFP is frequently used as a reporter of expression. The GFP gene can be stably introduced into organisms and maintained in their genome throughout breeding. Alternatively, it can be injected locally using a viral vector. To date, many bacteria, yeast and other fungal cells, plant, fly, and mammalian cells have been labelled using GFP as a marker.

Enhanced GFP (EGFP) is a mutation of GFP that dramatically improves the spectral characteristics of GFP, resulting in increased fluorescence and photostability, and a shift of the major excitation peak to 488 nm with the peak emission kept at 509 nm. The latter matches the spectral characteristics of commonly used FITC filter sets, making it more practical to use.