



## Technical Data Sheet

### Diagenode sa

CHU, Tour GIGA B34, 3<sup>e</sup> étage  
Avenue de l'Hôpital, 1  
4000 Liège - Belgium

**Product name:**  
antibody directed against AML-ETO/RUNX1

**(Protein CBFA2T1)**

**Other names:** AML1T1, CBFA2T1, CDR, ETO, MTG8, ZMYND2

<b>Catalog #:</b> pAb-080-050	<b>Type:</b> Polyclonal	<b>Size:</b> 50 µg/ 250 µl
<b>Lot #:</b> A134-0011	<b>Source:</b> Rabbit	<b>Concentration:</b> 0.2 µg/µl

**Description:** This antibody has been raised in rabbits against the AML-ETO (RUNX1) protein using KLH-conjugated synthetic peptides. The antibody recognizes the ETO (RUNX1T1) part of the fusion protein.

**Specificity:** Human: positive  
Other species: not tested

Applications	Suggested dilution	References
ELISA	1:100	Fig 1
Dot blotting	Not tested	
Western blotting	1:1,000	Fig 2
Gel Supershift	Not tested	
Immunochemistry	Not tested	
Flow cytometry	Not tested	
Immunoprecipitation	Not tested	
ChIP	Not tested	

**Format:** Polyclonal, affinity purified, antibody in PBS containing 0.05% azide and 0.05% ProClin 300.

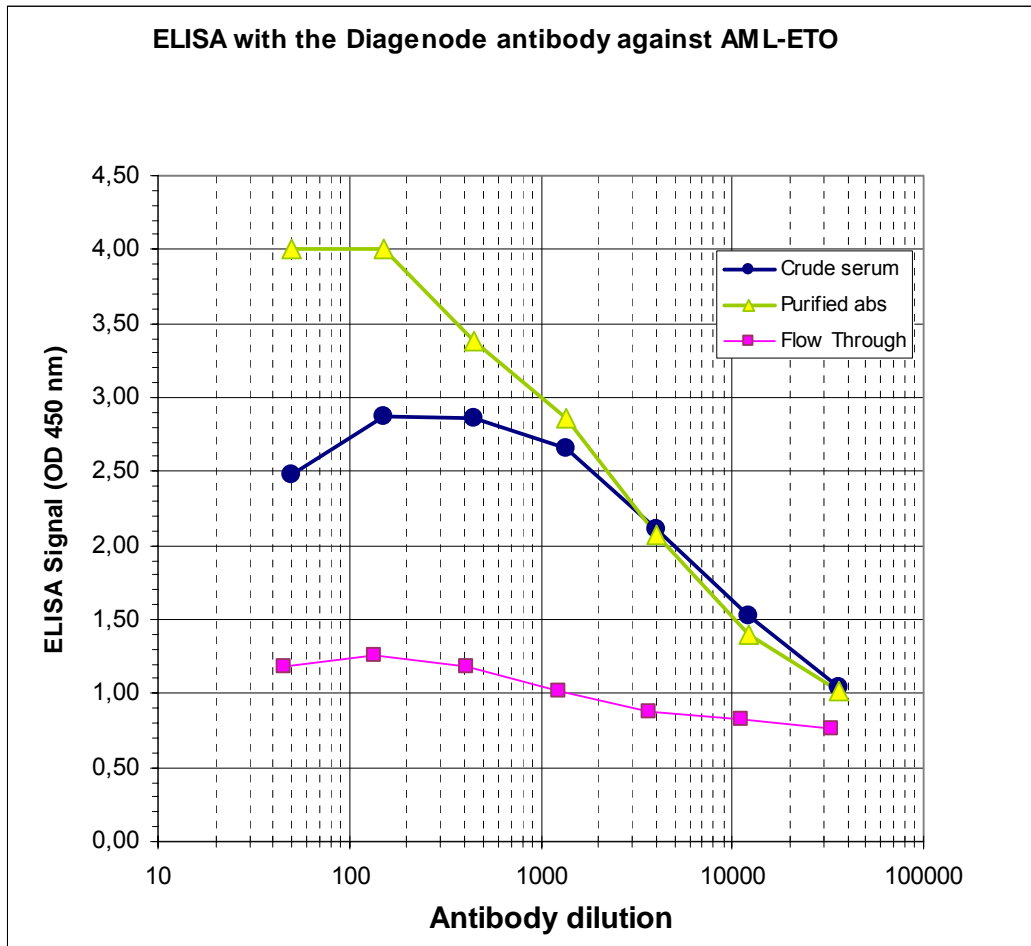
**Storage:** Store at -20°C/ -80°C. Avoid multiple freeze-thaw cycles.

**Precautions:** This product is for research use only. Not for use in diagnostic or therapeutic procedures.

**Availability date:** April 04, 2008. Last data sheet update: April 04, 2008

**Lot #:** A134-0011/ rabbit # A134/ bleed #: Day 66/ purification date: July 24, 2007

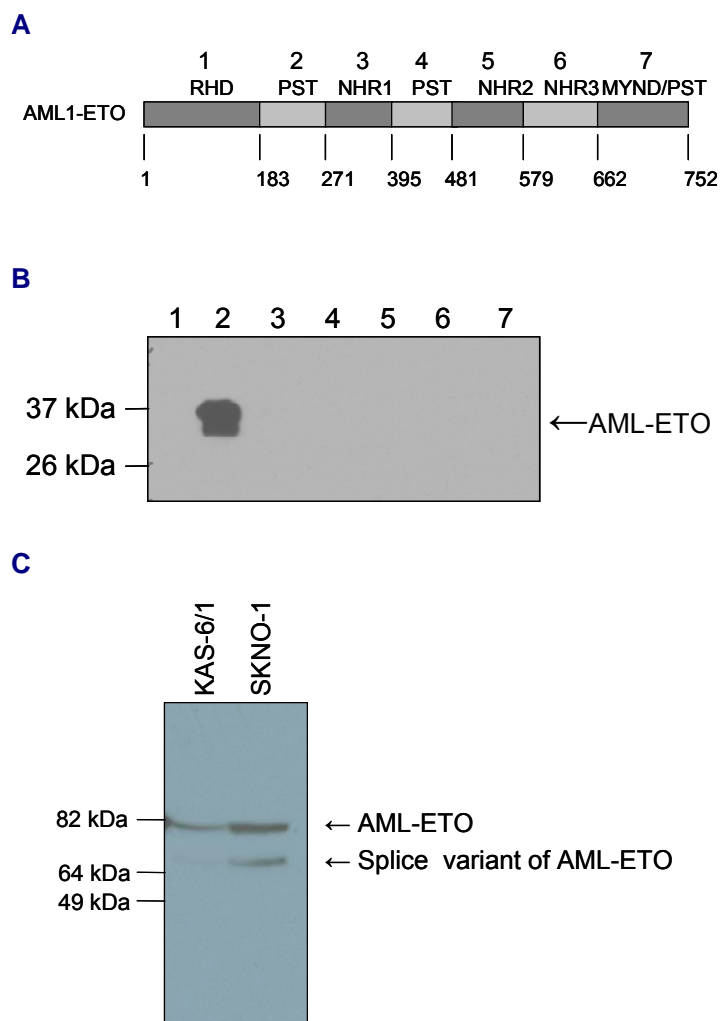
**Figure 1**



**Determination of the antibody titer**

To determine the titer of the antibody, an ELISA was performed using a serial dilution of purified antibody directed against AML-ETO (cat# pAb-080-050), crude serum and flow through in antigen coated wells. The synthetic peptide used to immunise the rabbits, served as antigen. By plotting the absorbance against the antibody dilution (Figure 1), the titer of the antibody was estimated to be 1:5,250.

**Figure 2**



**Western blot analysis using the Diagenode affinity purified antibody directed against AML-ETO.**

**Panel A:** GST-fusion proteins containing different parts of AML-ETO were constructed and run on a 15% polyacrylamide gel.

**Panel B:** Western blot was performed on seven GST-fusion proteins containing different fragments of AML-ETO (1-7). The Diagenode affinity purified antibody directed against AML-ETO (cat# pAb-080-050) was used at dilution 1:1,000 in TBS-Tween containing 5% skimmed milk. A molecular weight marker (in kDa) is shown on the left; the location of the protein of interest is indicated on the right. The antibody raised against AML-ETO recognizes the ETO part (also called RUNX1T1) of the fusion protein AML-ETO.

**Panel C:** Western blot was performed on nuclear extracts from KAS-6/1 cells (human myeloma cell line) and SKNO-1 cells (human acute myeloblastic leukaemia) with the Diagenode affinity purified antibody directed against AML-ETO (cat# pAb-080-050), diluted 1:1,000 in TBS-Tween containing 5% skimmed milk. On the left, a molecular weight marker is shown (in kDa). The location of AML-ETO and a presumed splice variant (missing 106 C-terminal amino acids) are indicated on the right.

## Overview

RUNX1T1 (UniProt/Swiss-Prot entry Q06455) is a putative transcription factor which forms a heterodimer with CBFA2T3. Defects in RUNX1T1 have been associated with acute myeloid leukemia (AML-M2) and may be a cause of colorectal cancer.