



Technical Data Sheet

Diagenode sa

CHU, Tour GIGA B34, 3^e étage
Avenue de l'Hôpital, 1
4000 Liège - Belgium

Product name:
antibody directed against PHF8

(PHD finger protein 8)

Other names: JHDM1F, MRXSSD, ZNF422

Catalog #: pAb-064-050	Type: Polyclonal	Size: 50 µg /39 µl
Lot #: A138-0031	Source: Rabbit	Concentration: 1.3 µg/µl

Description: Antibody raised against the human PHF8 protein. Isolated from a rabbit immunized with 3 different KLH-conjugated synthetic peptides.

Specificity: Human, mouse: positive
Other species: not tested

Applications	Suggested dilution	References
ELISA	1:100 – 1:500	Fig 1
Dot blotting	Not tested	
Western blotting	1:1,000	Fig 2
Gel Supershift	Not tested	
Immunochemistry	Not tested	
Flow cytometry	Not tested	
Immunoprecipitation	Not tested	
ChIP	Not tested	

Format: Polyclonal, affinity purified, antibody in PBS containing 0.05% azide and 0.05% ProClin 300.

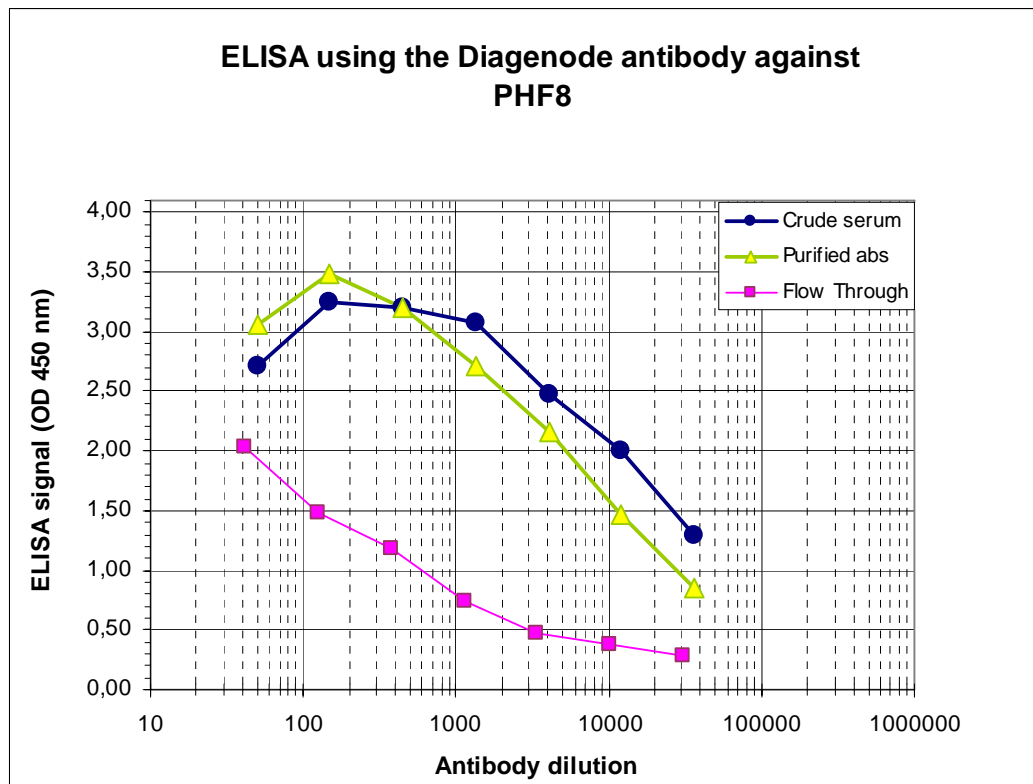
Storage: Store at -20°C. Avoid multiple freeze-thaw cycles.

Precautions: This product is for research use only. Not for use in diagnostic or therapeutic procedures.

Availability date: September 30, 2008. Last data sheet update: September 30, 2008

Lot #: 138-0031: rabbit # 138/ bleed #: Month 4/ purification date: April 6, 2007

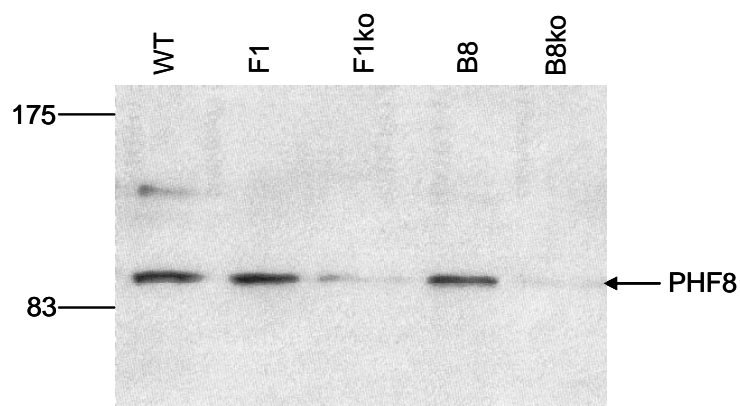
Figure 1



Determination of the antibody titer

To determine the titer of the antibody, an ELISA was performed using a serial dilution of the Diagenode antibody directed against human PHF8 (cat# pAb-064-050), crude serum and Flow Through in antigen coated wells. By plotting the absorbance against the antibody dilution (Figure 1), the titer of the purified antibody was estimated to be 1:6,500.

Figure 2



Western blot analysis using the Diagenode antibody against PHF8

E14TG2A mouse embryonic stem cells were transfected with a conditional allele of PHF8. Nuclear extracts (135 µg) from wild type cells (WT) and from 2 clones (F1, B8) with an active and a targeted allele (F1ko, B8ko), respectively, were analysed by Western blot using the Diagenode antibody directed against PHF8 (cat# pAb-064-050). The antibody was diluted 1:1,000. The position of the protein of interest is indicated on the right; the marker (in kDa) is shown on the left.

Overview

PHD finger protein 8 (UniProtKB/Swiss-Prot entry Q9UPP1) is a jumonji domain containing protein. Like other members of the jumonji family, PHF8 may therefore play a role in histone demethylation. Mutations in PHF8 lead to Siderius type X-linked mental retardation (MRXSSD), a mild to borderline type of mental retardation.