

PRODUCT NAME		
PML polyclonal antibody		
Other names: MYL, PP8675, RNF71, TRIM19		
Cat. No. pAb-108-050	Type: Polyclonal	Size: 50 µg /360 µl
Lot #: A136-0011	Source: Rabbit	Concentration: 0.14 µg/µl

Description: Polyclonal antibody raised in rabbit against human PML (Promyelocytic leukemia), using 3 different KLH-conjugated synthetic peptides.

Specificity: Human: positive
Other species: not tested

Applications	Suggested dilution	References
ELISA	1:100 – 1:200	Fig 1
Western blotting	1:750	Fig 2

Purity: Affinity purified polyclonal antibody in PBS containing 0.05% azide and 0.05% ProClin 300.

Storage: Store at -20°C; for long storage, store at -80°C. Avoid multiple freeze-thaw cycles.

Precautions: This product is for research use only. Not for use in diagnostic or therapeutic procedures.

Last data sheet update: March 4, 2010

Target description

PML (UniProtKB/Swiss-Prot entry P29590) is a transcription factor and tumor suppressor which belongs to the tripartite motif (TRIM) family. This motif contains three zinc-binding domains, a RING, a B-box type 1 and a B-box type 2, and a coiled-coil region. PML regulates the response of p53 to oncogenic signals. It is often involved in a chromosomal translocation between chromosomes 15 and 17 which results in a PML/RARalpha fusion protein and is associated with most cases of acute promyelocytic leukemia.

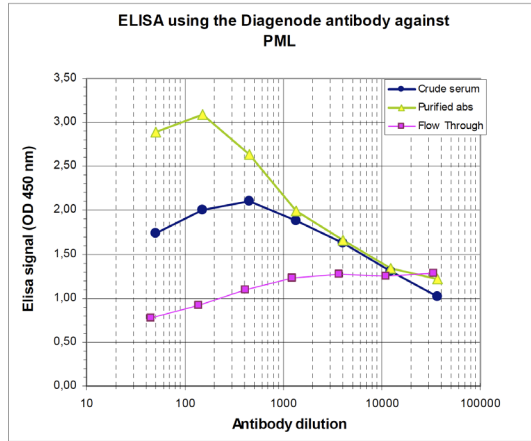


Figure 1
Determination of the antibody titer

To determine the titer of the antibody, an ELISA was performed using a serial dilution of the Diagenode antibody directed against human PML (Cat. No. pAb-108-050), crude serum and Flow Through in antigen coated wells. By plotting the absorbance against the antibody dilution (Figure 1), the titer of the antibody was estimated to be 1:6,000.

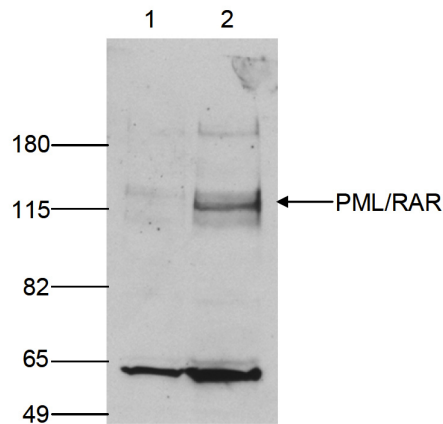


Figure 2
Western blot analysis using the Diagenode antibody directed against PML

Human embryonic kidney cells [293T] were transfected with an ER-tagged PML/RAR fusion protein. Nuclear extracts (50 µg) from control (lane 1) and from transfected cells (lane 2) were analysed by Western blot using the Diagenode antibody against PML (Cat. No. pAb-108-050). The antibody was diluted 1:750 in TBS-Tween containing 5% milk powder. The position of the PML/RAR fusion protein is indicated on the right; the marker (in kDa) is shown on the left. The smaller band of approximately 60 kDa might represent the endogenous PML protein.