

PRODUCT NAME		
ASH2 polyclonal antibody		
Other names: ASH2L, ASH2L1, ASH2L2, Bre2		
Cat. No. pAb-026-050	Type: Polyclonal	Size: 50 µg/ 25 µl
Lot #: 001	Source: Rabbit	Concentration: 2.0 µg/µl

Description: Polyclonal antibody raised in rabbit against human Ash2 (absent, small, or homeotic 2), using a recombinant protein.

Specificity: Human: positive
Other species: not tested

Applications	Suggested dilution	References
Western blotting	1:1,000	Fig1

Purity: Protein G purified polyclonal antibody in PBS containing 0.05% azide and 0.05% ProClin 300.

Storage: Store at -20°C; for long storage, store at -80°C. Avoid multiple freeze-thaw cycles.

Precautions: This product is for research use only. Not for use in diagnostic or therapeutic procedures.

Last data sheet update: April 9, 2010

Target description

ASH2 (UniProtKB/Swiss-Prot entry Q9UBL3) is a component of the SET1/ASH2 histone methyltransferase (HMT) complex. This complex specifically methylates K4 of histone H3, thereby activating transcription. Methylation of K4 is blocked by pre-methylation of the neighboring K9, a repressor of transcription. This indicates that the SET1/ASH2 HMT complex mediates the crosstalk between K9 methylation and K4 methylation. ASH2 plays a role in hematopoiesis and may be associated with some kinds of leukemia.

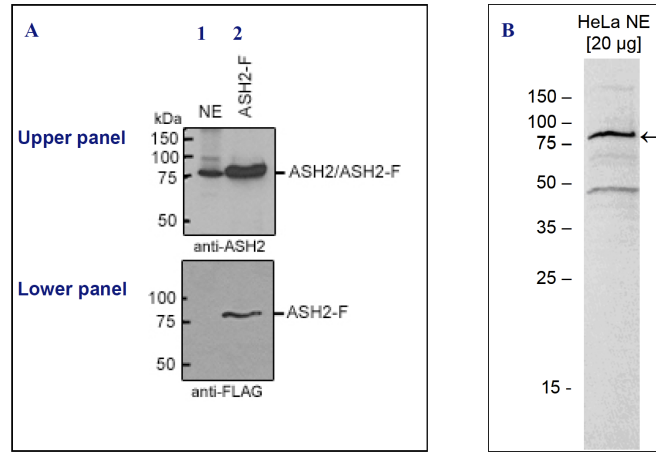


Figure 1

Western blot analysis using the Diagenode antibody directed against ASH2

Western blot was performed on HeLa nuclear extract (HeLa NE, 20 µg) using the Diagenode antibody against ASH2 (Cat. No. pAb-026-050) diluted 1:1,000 in TBS-Tween containing 5% skimmed milk. The molecular weight marker (in kDa) is shown on the left; the location of the protein of interest is indicated on the right.