



Technical Data Sheet

Diagenode sa

CHU, Tour GIGA B34, 3^e étage
Avenue de l'Hôpital, 1
4000 Liège - Belgium

Product name:
antibody directed against hChd1
(human Chd1)

Catalog #: pAb-020-050	Type: Polyclonal	Size: 50 µg/ 25 µl
Lot #: 001	Source: Rabbit	Concentration: 2.0 µg/µl

Description: This antibody has been raised against the human Chd1 recombinant GST fusion protein.

Specificity: Human: positive
Other species: not tested

Applications	Suggested dilution	References
ELISA	Not tested	
Dot blotting	Not tested	
Western blotting	1:500	Fig 1
Gel Supershift	Not tested	
Immunochemistry	Not tested	
Flow cytometry	Not tested	
Immunoprecipitation	-	
ChIP	Not tested	

Format: In solution in PBS including 0.05% azide and 0.05% ProClin 300. The polyclonal antibody has been protein G purified.

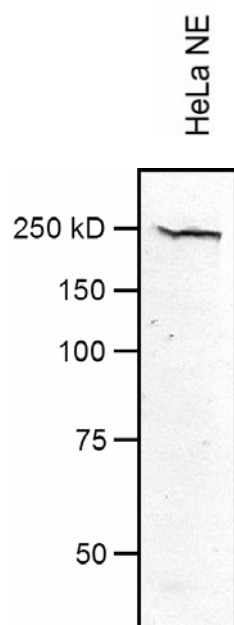
Storage: For long storage, store at -20°C/ -80°C. Do not freeze-thaw.

Precautions: This product is for research use only. Not for use in diagnostic or therapeutic procedures.

Availability date: March 16, 2007. Last data sheet update: March 19, 2007

Lot #: 001/ purification day: March 6, 2007

Figure 1:



Western blot analysis using the antibody from Diagenode anti-hChd1

HeLa nuclear extract (NE) was analysed by Western blot using the antibody directed against hChd1 (Diagenode, cat# pAb-020-050), used at dilution 1:500. On the left side, a molecular weight marker is shown.