

PRODUCT NAME		
hHP1 α , β and γ polyclonal antibody		
Other names: CBX5, 1, 3		
Cat. No. pAb-071-050	Type: Polyclonal	Size: 50 μ g/ 25 μ l
Lot #: 001	Source: Rabbit	Concentration: 2.0 μ g/ μ l

Description: Polyclonal antibody raised in rabbit against human HP1 β (Heterochromatin protein 1 homolog beta), using the full length recombinant GST tagged protein. The antibody also recognizes the α and γ isoforms.

Specificity: Human: positive
Other species: not tested

Applications	Suggested dilution	References
Western blotting	1:1,000	Fig 1

Purity: Protein G purified polyclonal antibody in PBS containing 0.05% azide and 0.05% ProClin 300.

Storage: Store at -20°C; for long storage, store at -80°C. Avoid multiple freeze-thaw cycles.

Precautions: This product is for research use only. Not for use in diagnostic or therapeutic procedures.

Last data sheet update: March 17, 2010

Target description

HP1 alpha, beta and gamma [UniProt/Swiss-Prot entry P45973, P83916 and Q13185] are components of heterochromatin. They recognize and bind histone H3 tails methylated at 'Lys-9', leading to epigenetic repression of transcription. HP1 alpha, beta and gamma also interact with lamin B receptor (LBR), thereby contributing to the association of heterochromatin with the inner nuclear membrane.

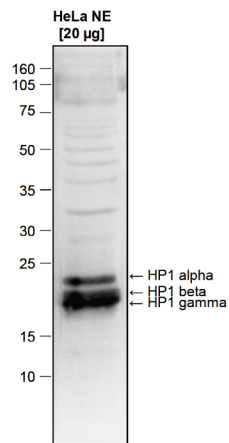


Figure 1

Western blot analysis using the Diagenode antibody directed against hHP1 α , β and γ

Western blot was performed on nuclear extracts from HeLa cells (20 μ g) with the Diagenode antibody against human HP1 α , β and γ (Cat. No. pAb-071-050) diluted 1:1,000 in TBS-Tween containing 5% skimmed milk (Figure 1). The molecular weight marker (in kDa) is shown on the left; the expected location of HP1 α , HP1 β and HP1 γ is indicated on the right.