

PRODUCT NAME SAP30 polyclonal antibody		
Cat. No. pAb-036-050	Type: Polyclonal	Size: 50 µg/ 61 µl
Lot #: 001	Source: Rabbit	Concentration: 2.0 µg/µl

Description: Polyclonal antibody raised in rabbit against human SAP30 (Sin3-associated polypeptide, 30kDa), using the full length His-tagged protein.

Specificity: Human: positive
Other species: not tested

Applications	Suggested dilution	References
Western blotting	1:1,000	Fig 1

Purity: Protein G purified polyclonal antibody in PBS containing 0.05% azide and 0.05% ProClin 300.

Storage: Store at -20°C; for long storage, store at -80°C. Avoid multiple freeze-thaw cycles.

Precautions: This product is for research use only. Not for use in diagnostic or therapeutic procedures.

This antibody has been described in:

(1) Zhang Y, Sun ZW, Iratni R, Erdjument-Bromage H, Tempst P, Hampsey M and Reinberg D (1998) SAP30, a novel protein conserved between human and yeast, is a component of a histone deacetylase complex. Mol. Cell. 1: 1021-1031.

Last data sheet update: April 23, 2010

Target description

SAP30 (UniProtKB/Swiss-Prot entry O75446) is a component of the histone deacetylase complex, which also includes SIN3, SAP18, HDAC1, HDAC2, RbAp46, RbAp48. Histone acetylation and deacetylation play a key role in the regulation of eukaryotic gene expression. This complex only deacetylates core histone octamers, and is not able to deacetylate nucleosomal histones.

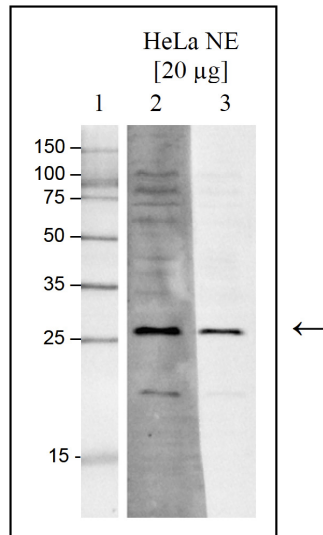


Figure 1

Western blot analysis using the Diagenode antibody directed against SAP30

Western blot was performed on nuclear extracts from HeLa cells (HeLa NE, 20 µg) using the Diagenode antibody against SAP30 (Cat. No. pAb-036-050) diluted 1:1000 in TBS-Tween containing 5% skimmed milk. The molecular weight marker (in kDa) is shown on the left; the location of the protein of interest is indicated on the right.