



## Technical Data Sheet

**Diagenode sa**  
CHU, Tour GIGA B34, 3<sup>e</sup> étage  
Avenue de l'Hôpital, 1  
4000 Liège - Belgium

**Product name:**  
antibody directed against hSki3  
  
(human Ski3, a component of the human SKI complex)

<b>Catalog #:</b> pAb-011-150	<b>Type:</b> Polyclonal	<b>Size:</b> 150 µg/ 50 µl
<b>Lot #:</b> 001	<b>Source:</b> Rabbit	<b>Concentration:</b> 3.0 µg/ µl

**Description:** This antibody has been raised against recombinant human Ski3

**Specificity:** Human: positive  
Other species: not tested

Applications	Suggested dilution	References
ELISA	Not tested	
Dot blotting	Not tested	
Western blotting	1:1000	Fig1, [1]
Gel Supershift	Not tested	
Immunocytochemistry	-	Fig2, [1]
Flow cytometry	Not tested	
Immunoprecipitation	-	[1]
ChIP	-	

**Format:** In solution in PBS including 0.05% azide and 0.05% ProClin 300. The polyclonal antibody has been protein G purified

**Storage:** For long storage, store at -20°C. Do not freeze-thaw.

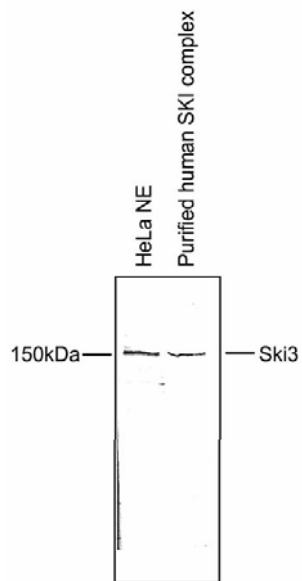
**Precautions:** This product is for research use only. Not for use in diagnostic or therapeutic procedures.

**References:**

[1] Zhu B., Mandal S. S., Pham A.D., Zheng Y., Erdjument-Bromage H., Batra S.K., Tempst P. and Reinberg D. 2005. *Genes Dev.* 19:1668-73.

**Availability date:** February 19, 2007

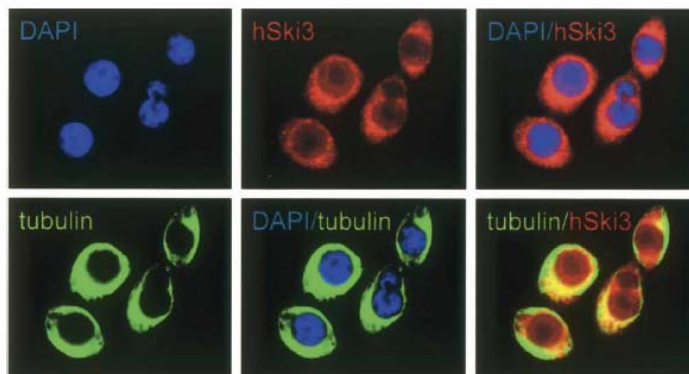
**Figure 1**



**Western blot analysis of extracts and purified proteins using the antibody anti-hSki3 from Diagenode**

HeLa nuclear extract and purified human SKI complex were analysed by Western blot using the antibody anti-hSki3 from Diagenode (at dilution 1:1000). Size and location of the protein are indicated.

**Figure 2**



**Immunocytochemistry results obtained with the antibody anti-hSki3 from Diagenode.**

HeLa cells were stained with the antibody directed against hSki3 and with DAPI and antibody anti- $\alpha$ -tubulin.

in blue: DAPI staining to specifically label the DNA.

in red: immunofluorescent labeling of hSki3

in green: antibody anti- $\alpha$ -tubulin is used to label the cytoplasm

hSki3 is detected in the cytoplasm and in the nucleus and appears to be excluded from the nucleolus.