

PRODUCT NAME		
SKI3 polyclonal antibody		
Other names: SKI5		
<b>Cat. No.</b> pAb-011-150	<b>Type:</b> Polyclonal	<b>Size:</b> 150 µg/ 50 µl
<b>Lot #:</b> 001	<b>Source:</b> Rabbit	<b>Concentration:</b> 3.0 µg/µl

**Description:** Polyclonal antibody raised in rabbit against human SKI3, using a recombinant protein.

**Specificity:** Human: positive  
Other species: not tested

Applications	Suggested dilution	References
Western blotting	1:1,000	Fig1
Immunofluorescence	1:100 - 1:500	Fig 2; Ref 1
ChIP	1 - 5 µg per ChIP	Ref 1

**Purity:** Protein G purified polyclonal antibody in PBS containing 0.05% azide and 0.05% ProClin 300.

**Storage:** Store at -20°C; for long storage, store at -80°C. Avoid multiple freeze-thaw cycles.

**Precautions:** This product is for research use only. Not for use in diagnostic or therapeutic procedures.

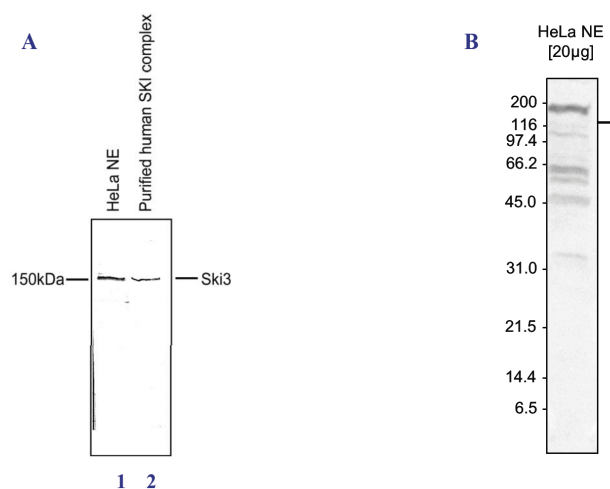
**This antibody has been described in:**

(1) Zhu B, Mandal SS, Pham AD, Zheng Y, Erdjument-Bromage H, Batra SK, Tempst P and Reinberg D (2005) The human PAF complex coordinates transcription with events downstream of RNA synthesis. *Genes Dev* 19:1668-1673.

**Last data sheet update:** April 8, 2010

**Target description**

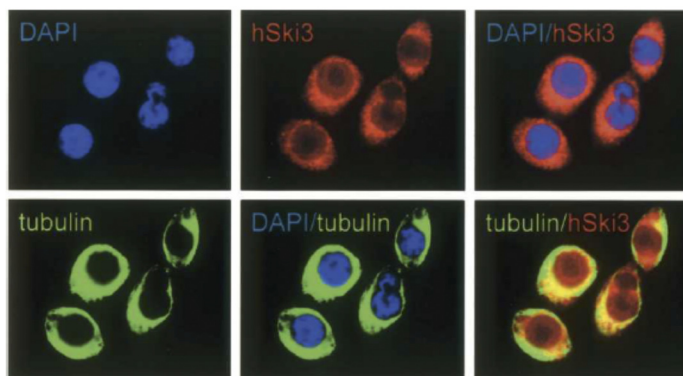
SKI3 is a component of the SKI complex which is composed of SKI2, SKI3 and SKI8. The SKI complex interacts with SKI7, making the link between the SKI complex and the exosome in order to perform mRNA degradation.



**Figure 1**

**Western blot analysis using the Diagenode antibody directed against SKI3**

Western blot was performed on HeLa nuclear extracts (lane 1) and on the purified human SKI complex (lane 2) (Figure 1A), or on nuclear extracts from HeLa cells (HeLa NE, 20 µg) (Figure 1B) using the Diagenode antibody against SKI3 (Cat. No. pAb-011-150) diluted 1:1,000. The location of the protein is indicated on the right, the marker (in kDa) is shown on the left.



**Figure 2**

**Immunofluorescence with the Diagenode antibody directed against SKI3**

HeLa cells were stained with the Diagenode antibody against SKI3 (Cat. No. pAb-011-150) (in red), with DAPI to label the DNA (in blue), and with an antibody against  $\alpha$ -tubulin to label the cytoplasm (in green). SKI3 is detected in both the cytoplasm and the nucleus but appears to be excluded from the nucleolus.