



## Technical Data Sheet

Diagenode sa  
CHU, Tour GIGA B34, 3<sup>e</sup> étage  
Avenue de l'Hôpital, 1  
4000 Liège - Belgium

**Product name:**  
antibody directed against RFXAP  
**(Regulatory factor X-associated protein)**  
**Other names:** RFX-associated protein

|                                  |  |                                    |
|----------------------------------|--|------------------------------------|
| <b>Catalog #:</b><br>pAb-061-050 | <b>Type:</b><br>Polyclonal <b>ChIP-grade</b> | <b>Size:</b><br>50 µg/ 50 µl       |
| <b>Lot #:</b> 001                | <b>Source:</b><br>Rabbit                     | <b>Concentration:</b><br>1.0 µg/µl |

**Description:** This antibody has been raised against the recombinant RFXAP protein.  
RFXAP is part of the RFX complex that binds to the X-box of MHC II promoters (see overview below).

**Specificity:** Human: positive  
Other species: not tested

| Applications        | Suggested dilution | References |
|---------------------|--------------------|------------|
| ELISA               | Not tested         |            |
| Dot blotting        | Not tested         |            |
| Western blotting    | Not tested         |            |
| Gel Supershift      | Not tested         |            |
| Immunocytochemistry | Not tested         |            |
| Flow cytometry      | Not tested         |            |
| Immunoprecipitation | Not tested         |            |
| ChIP                | 5-7 µg/IP          | Fig 1      |

**Format:** In solution in PBS containing 0.05% azide. The polyclonal antibody has been affinity purified.

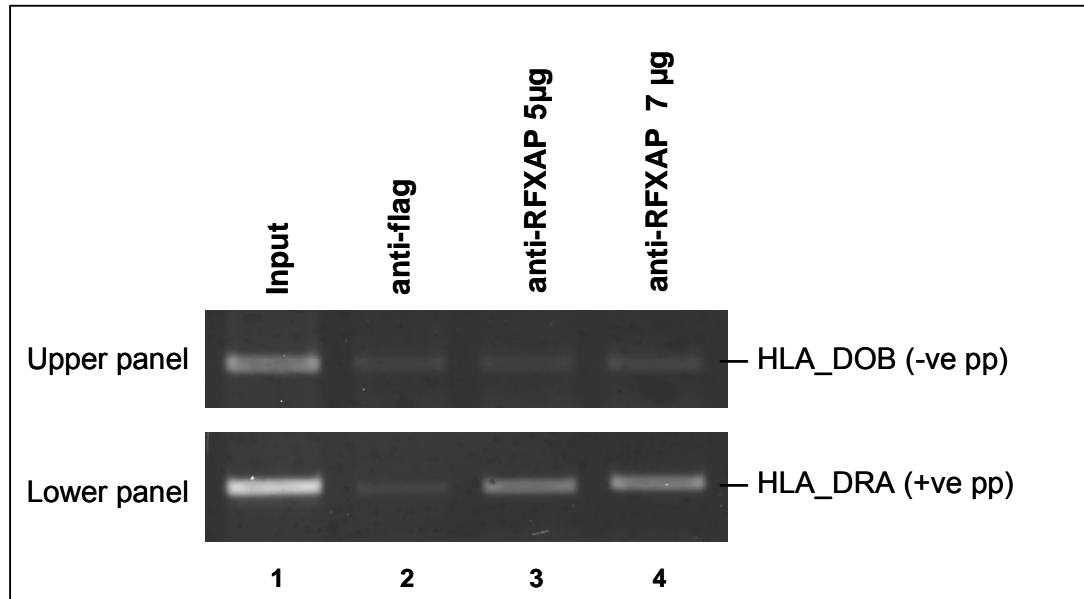
**Storage:** For long storage, store at -20°C/ -80°C. Avoid multiple freeze-thaw cycles.

**Precautions:** This product is for research use only. Not for use in diagnostic or therapeutic procedures.

**Availability date:** September 3, 2007. Last data sheet update: September 20, 2007

**Lot #:** 001

**Figure 1**



**ChIP results obtained with the Diagenode antibody directed against RFXAP.**

ChIP assays were performed using NALM cells (a cell line derived from human pre-B leukemia), the affinity purified antibody directed against RFXAP (cat# pAb-061-050) and optimized primer sets. Chromatin sheared from  $2 \times 10^6$  cells and 5 µg (lane 3) and 7 µg (lane 4) of antibody anti-RFXAP were used per ChIP experiment. Antibody anti-flag (lane 2) is used as negative IP control. The primer pair HLA\_DRA was used as positive PCR control and HLA\_DOB was used a negative PCR control.

The ChIP results using the Diagenode antibody anti-RFXAP (cat# pAb-061-050) show a clear signal for the positive primer pair (HLA\_DRA) with respectively 5 and 7 µg of antibody per IP (Lower panel, lanes 3 and 4) and show no signal for the negative primer pair (HLA\_DOB) (Upper panel, lanes 3 and 4). The input is shown in lane 1 and the negative IP control (antibody anti-flag) is shown in lane 2.

**Overview**

RFX consists of at least 3 different subunits; RFXAP, RFX5 and RFX-B/RFXANK; with each subunit representing a separate complementation group. RFX forms cooperative DNA binding complexes with X2BP and CBF/NF-Y. RFX associates with CIITA to form an active transcriptional complex. Defects in RFXAP are a cause of bare lymphocyte syndrome type II (BLS II); also known as hereditary MHC class II deficiency or HLA class II-deficient combined immunodeficiency (UniProtKB/Swiss-Prot entry O00287: <http://www.expasy.org/uniprot/O00287>).